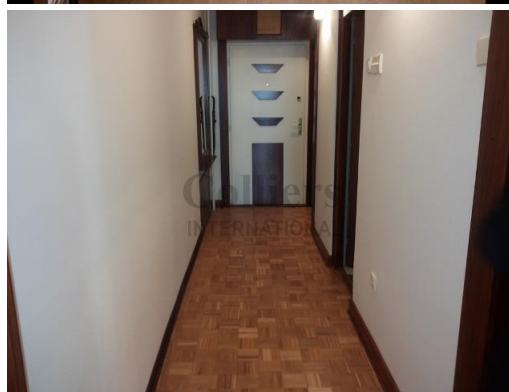


# FOR LEASE , Apartment



This beautiful apartment is ideally located in New Belgrade area, close to all amenities and the highway. Apartment is very bright, and has an excellent layout. It features hallway, living room connected with dining area, kitchen, two winter terraces, bathroom, and two bedrooms. Parking place could be provided in an underground garage for additional amount.

Location		Type	Apartment
Condition	Renovated	Size	66 m <sup>2</sup>
Furnishing	Could be provided	Rooms	3
Bedrooms	2	Bathrooms/Toilets	1
Heating	Central	Terrace/Balcony	Terrace: Yes 2
Garage	Impending	Parking	n/a
Yard			

PRICE 500 €  
Taxes not included in the price